

# PRESS RELEASE

**BICHA**  
STIMULATION  
FOR THE NATION

## **What am I doing here? Ke dirang ha?**

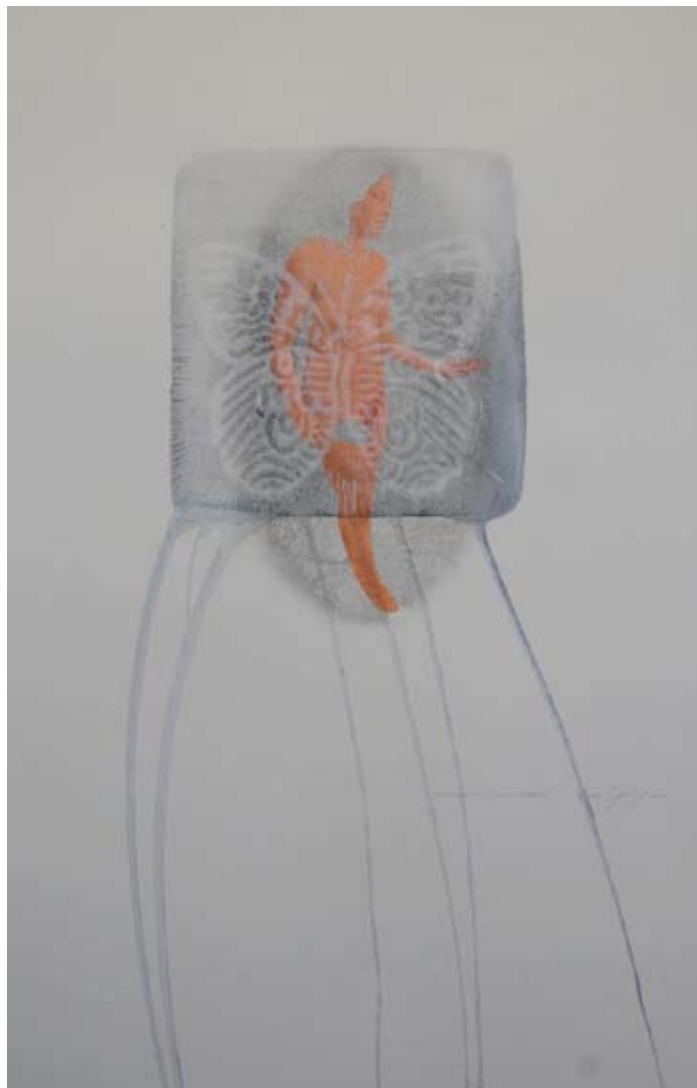
An exhibition of monoprints  
by artist in Botswana, Ann Gollifer

6-18 July, 2010

Private View: Wednesday 7 July, 2010 from 6.30 to 8.30pm

**‘What am I Doing Here? Ke Dirang Ha?’** is an exhibition of paintings and monoprints by artist in Botswana, Ann Gollifer exploring the condition of being an exotic in the exotic. Ann’s work is inspired by issues of the human condition, history and identity, both personal and collective.

Several of the pieces include vignetted photographic self portraits of the artist wearing high heels, carefully holding personal objects and memorabilia such as a wine glass, cigarette, her grandmother’s hand mirror or a small ornamental windmill.



This concept of working with the female body was inspired by a second hand book of photographic nudes from the 1950s. These nudes are positioned under studio lights and shot as pin ups in random domestic poses. Thus the mundane is made strange by the photographer’s gaze. The distance from the ordinary or in this case the nudity is reminiscent of early social anthropological documentary photography.

Overprinted are images that represent Botswana for Ann – a line of village dogs, a Brahmin bull, a women collecting firweod or the statues of the three founding chiefs of Botswana; Khama, Sebele and Bathoen.

Ann Mary Gollifer, *Serurubela. Ke dirang ha?*, W 565 x H 765 mm,  
Photocopy transfer with acrylic wash and embossed lino on BKT Rives paper

Bicha Gallery & Shop  
7 Gabriel's Wharf  
South Bank  
London SE1 9PP

T +44 (0)7721 400 048  
E info@bicha.co.uk  
www.bicha.co.uk



**Ann Mary Gollifer, *Three Chiefs with house, heart and woman and child*, W 700 x H 500 mm, Lino on Arches paper**

The resulting work addresses the relationships or lack of relationships we have with the world around us. As Ann puts it, 'I am seen but not seen. I see but do not see'. Although the references are personal, the sense of wonder and feeling of displacement are universal.

*"Ann Gollifer is an artist who, through her personal search, has cut a path of innovation, technical and aesthetic excellence and ambitiousness which has made many of us explore our own limitations with more skepticism. Unsurprisingly, we are again subjected to a sensuous treat of the delicate and powerful."*

**STEVE JOBSON, EXHIBITION JUDGE, 2009 ARTISTS IN BOTSWANA EXHIBITION  
NATIONAL MUSEUM AND ART GALLERY, GABORONE**

---

Ann Mary Gollifer is a permanent resident of Botswana since 1985 living and working in Gaborone. She was born in British Guiana, (Guyana), of an English father and an Amerindian mother. A member of the Thapong Visual Art centre, she was part of the executive committee responsible for the building of the centre. She has also helped run design, drawing and painting workshops for artists, fundraised for workshops and residencies and organized exhibitions and juried shows and awards.

## Education

1983 Edinburgh University, MA. History of Art

## Awards

1996 **Award for Painting** from the Artists in Botswana Exhibition  
National Museum and Art gallery, Gaborone, Botswana

1997 **Award for Sculpture** from the Artists in Botswana Exhibition  
National Museum and Art gallery, Gaborone, Botswana

2003 **Award for Painting** from the Artists in Botswana Exhibition  
National Museum and Art gallery, Gaborone, Botswana

## One Person Exhibitions

2004 **'Natural Mystic'**: One Woman Show at the Frame Gallery  
Gaborone, Botswana

2004 **'Old Symbols New Signs'**: One Woman Show at the Bamboo Space  
Johannesburg, South Africa

2006 **'Territories Of The Heart'**: a solo exhibition  
at the Museu Nacional de Arte, Maputo, Mozambique

2009 **Godesses and Superhero's**. Everard Reed Johannesburg.  
Opening with Diana Hyslop and Paula Louw

## Selected Group Shows

1993 Work selected for **'Botswana Live'** exhibition  
Commonwealth institute, London

1995 The exhibition traveled to Chicago and Washington

1997 The exhibition traveled to Stockholm

Work selected for the **4th , 5th , 8th and 9th Women Artists' Biennale**, Ferrara, Italy.

1999 **'Three Women Three Perspectives'** an exhibition of work by Ann Gollifer,  
Coex ae Qgam (Dada) and Neo Matome that traveled to all the Regional Museums  
in Botswana.

2000 Work selected for the **SADC exhibition of International Art** held  
at the National Art Gallery of Namibia, in Windhoek

2000 **'Three Women Three Perspectives'** an exhibition of new work by Ann Gollifer,  
Coex ae Qgam (Dada) and Neo Matome that traveled to Cape Town, Durban,  
Johannesburg, Windhoek and Gaborone; funded and hosted by the Alliance  
Francaise, Botswana

2001 Work selected for an exhibition of **Art from Botswana**; Beijing, China

Bicha Gallery & Shop  
7 Gabriel's Wharf  
South Bank  
London SE1 9PP

T +44 (0)7721 400 048  
E info@bicha.co.uk  
www.bicha.co.uk

2001 Shepherd Ndudzo and Ann Gollifer showing **Canvas and Wood** at the National Museum and Art Gallery, Gaborone, Botswana.

2002 Monomotapa, residency exhibition at the **Fordsburg Artists' studios**, Johannesburg

2003 Participated in a collective installation in Berlin: **Transportale**

2003 Participated in an on-line collaborative exhibition originated in Thailand 'Procreation-Postcreation' **International Art Exchange**

2004 Work selected for '**Abale**' a juried international, contemporary art exhibition, Lusaka, Zambia organized by The Rockston Studio and Norsad.

2005 Work selected for the **TDM Biennale** in Maputo, Mozambique.

2005 Invitation to Finland with work selected for '**Cross Roads in the Kgalagadi**' an exhibition of Art from Botswana, Helsinki.

2008 Lefoko, Dibi, Igama, Word. **Group Exhibition**. Atherstone Room, Monument. Grahamstown Festival, Main Programme.

2009 **Godesses and Superheros**. Everard Reed Johannesburg. Opening with Diana Hyslop and Paula Louw.

## Residencies

Fordsburg Art Studios, the Bag factory, Johannesburg 2002

## Workshops

1991 **Thapong International Artists Workshop**, Botswana

1992 **Thapong International Artists Workshop**, Botswana

1998 **Mbile International Artists Workshop**, Zambia

2000 **Thupelo International Artists Workshop**, South Africa

2001 **Thapong International Artists Workshop**, Botswana

2008 **Triangle Workshop**, New York

---

For further information, text or images, please contact **António Capelão**.  
Bicha Gallery, 7 Gabriel's Wharf, South Bank, London SE1 9PP  
Gallery +44 (0)20 7928 0083 | E antonio@bicha.co.uk | www.bicha.co.uk  
Open Tuesday through Sunday from 11am till 7pm

Bicha Gallery | What am I doing here? Ke dirang ha? | 6-18 July, 2010  
An exhibition of monoprints by artist in Botswana Ann Mary Gollifer

020 7928 0083, 7 Gabriel's Wharf, South Bank, London SE1 9PP | 11 am - 7pm Tues-Sun  
Tube: Waterloo, Embankment, Covent Garden, Southwark.